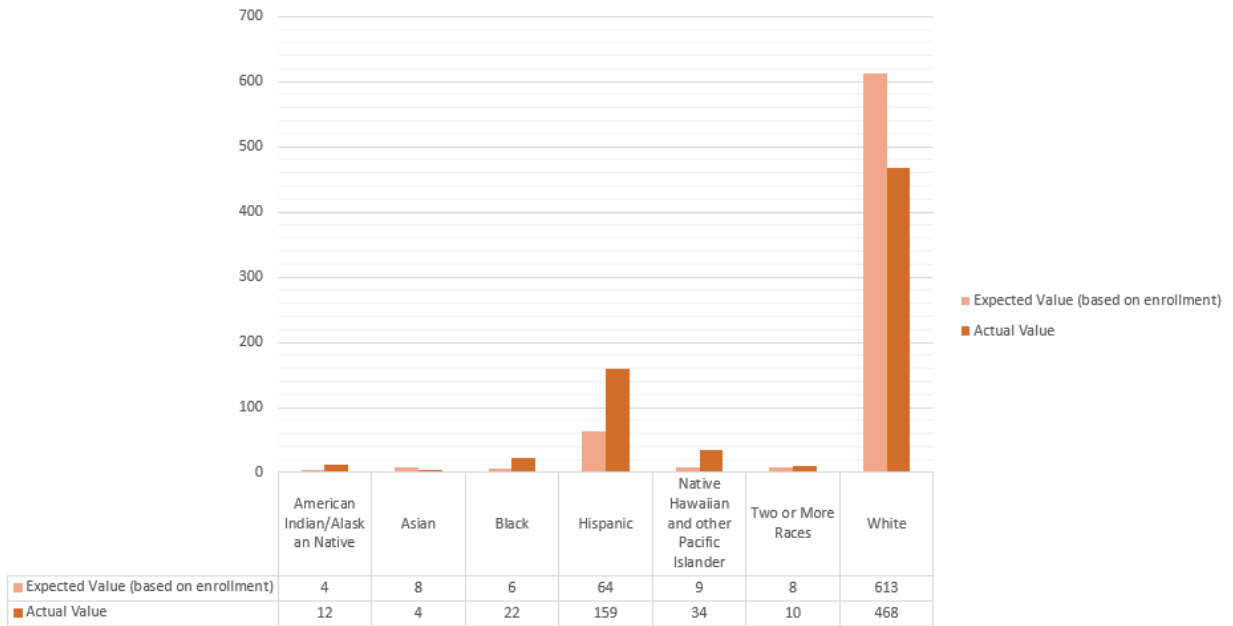
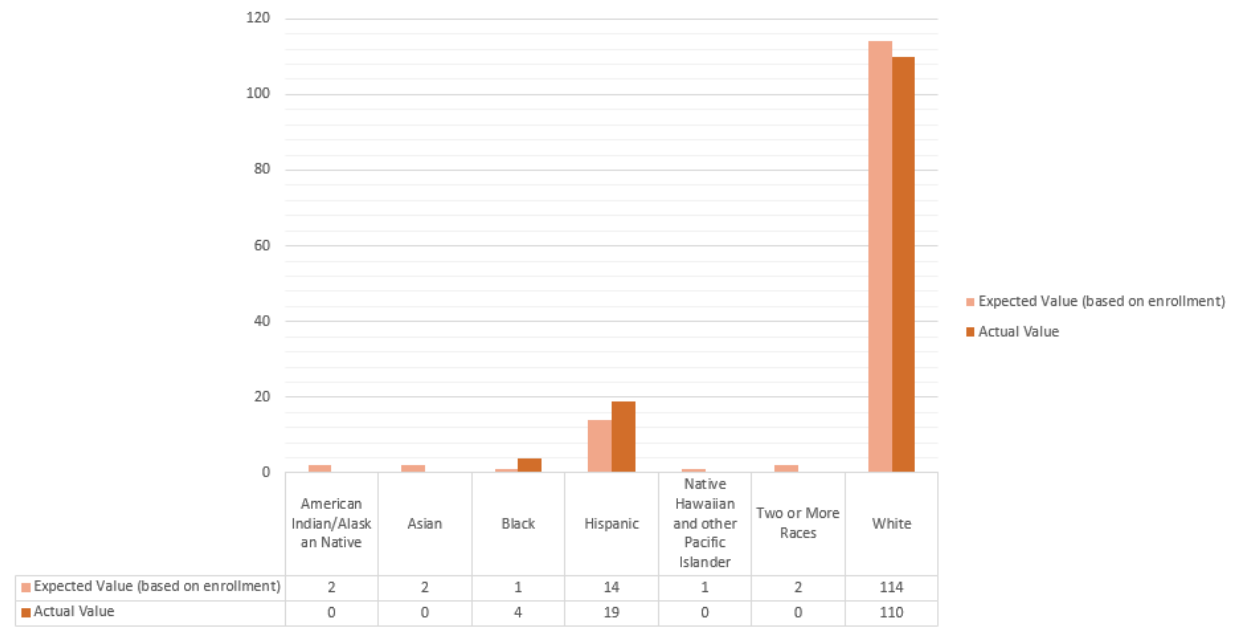


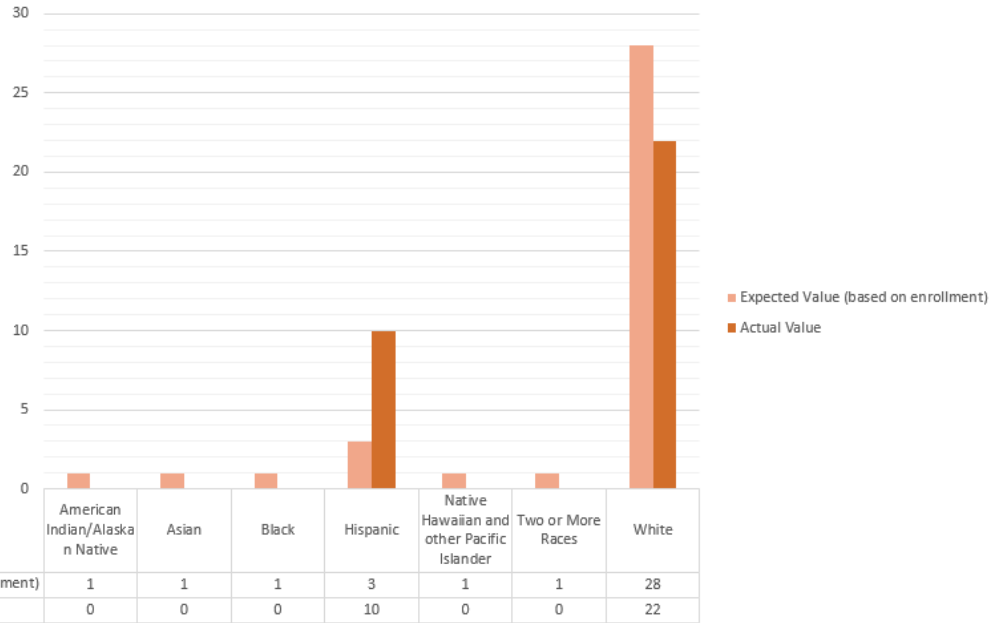
### Disciplinary Actions—Alpine District



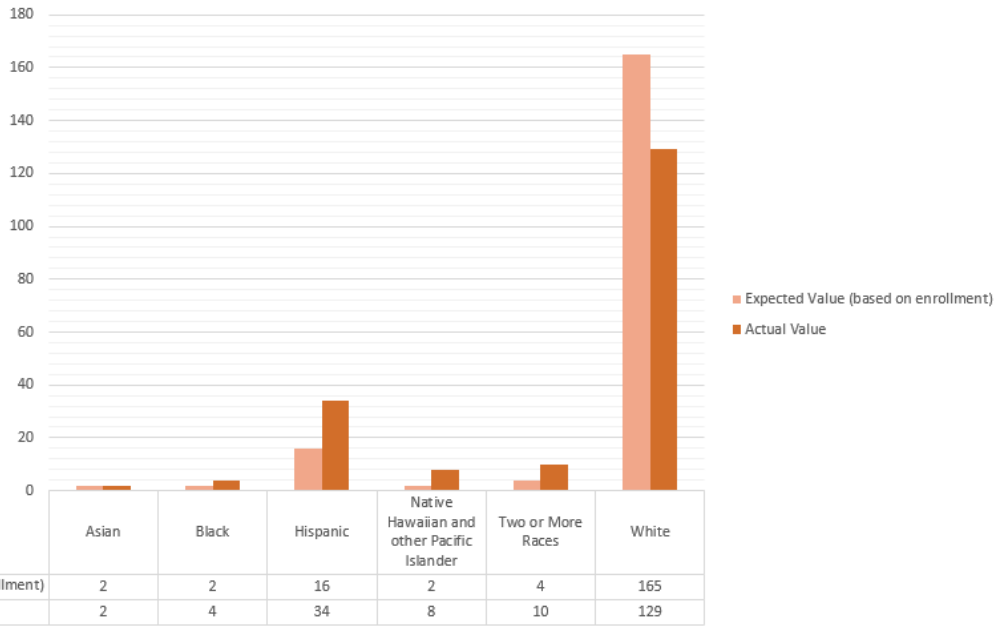
### Disciplinary Actions—Beaver District



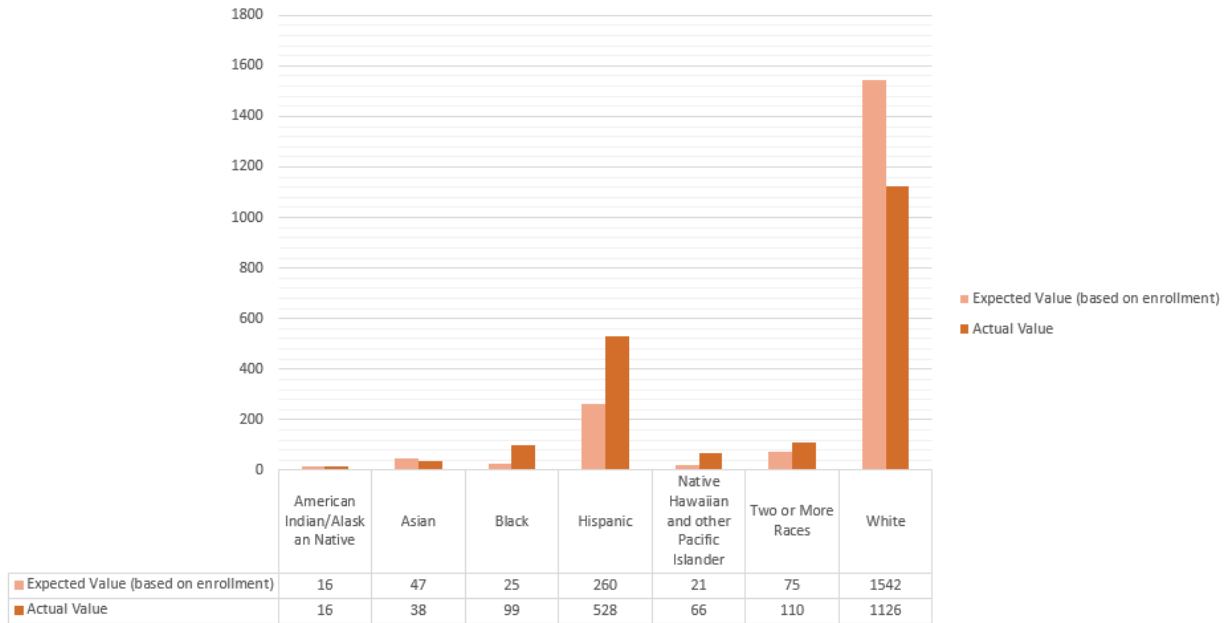
### Disciplinary Actions—Box Elder District



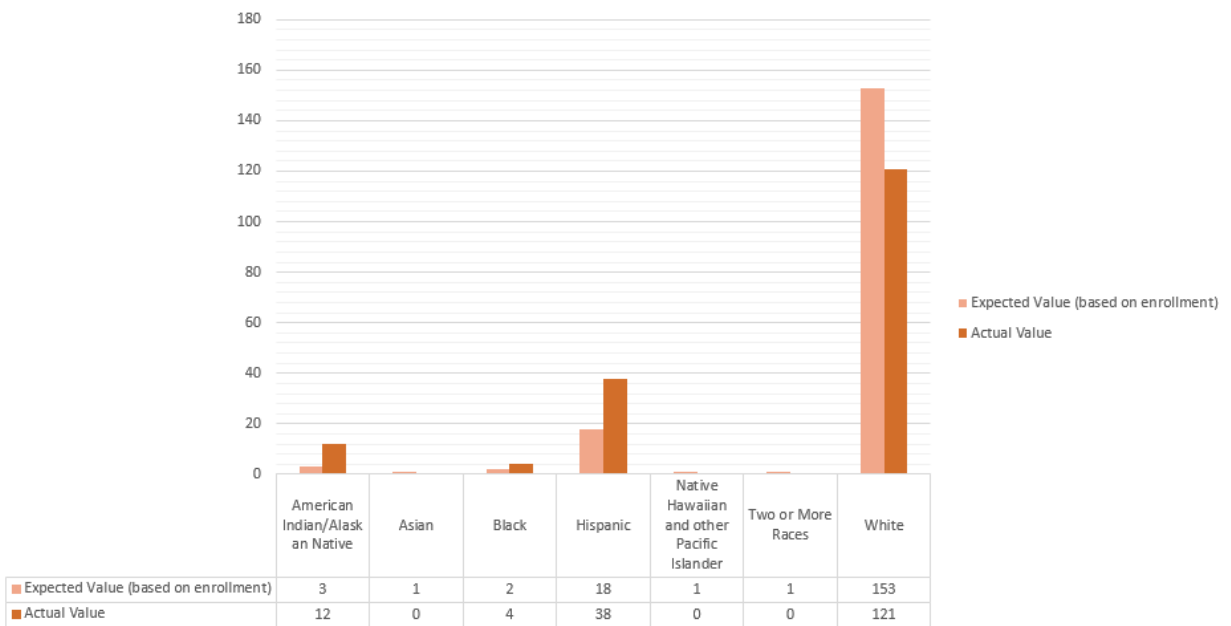
### Disciplinary Actions—Cache District



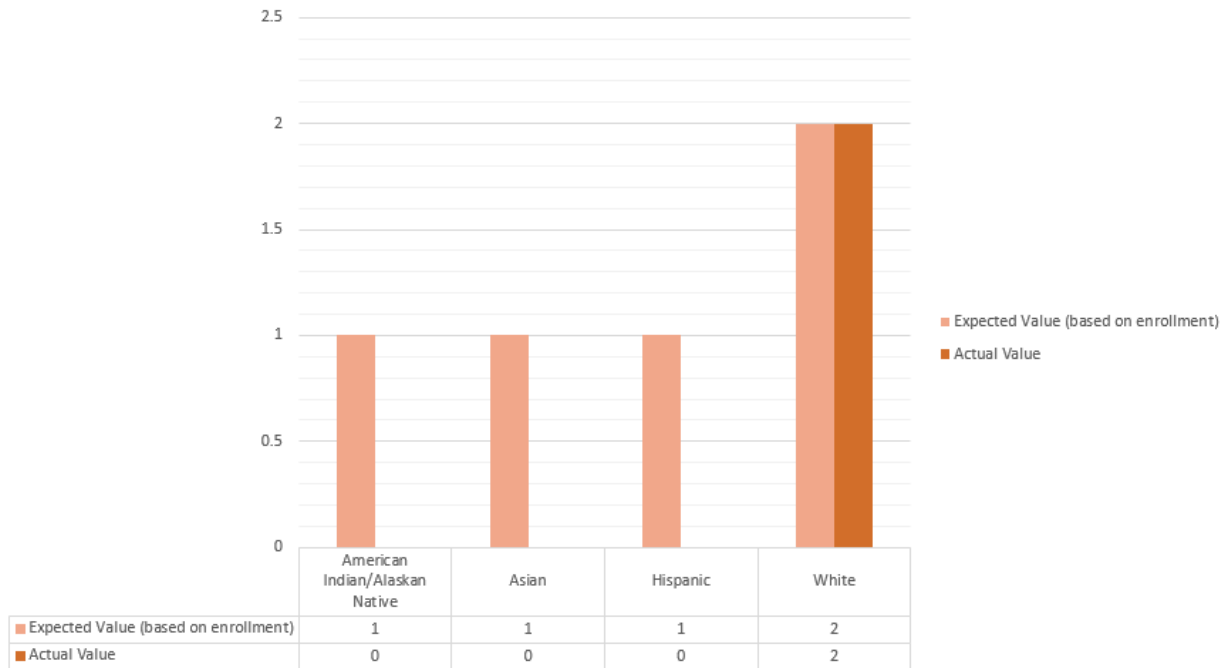
### Disciplinary Actions—Canyons District



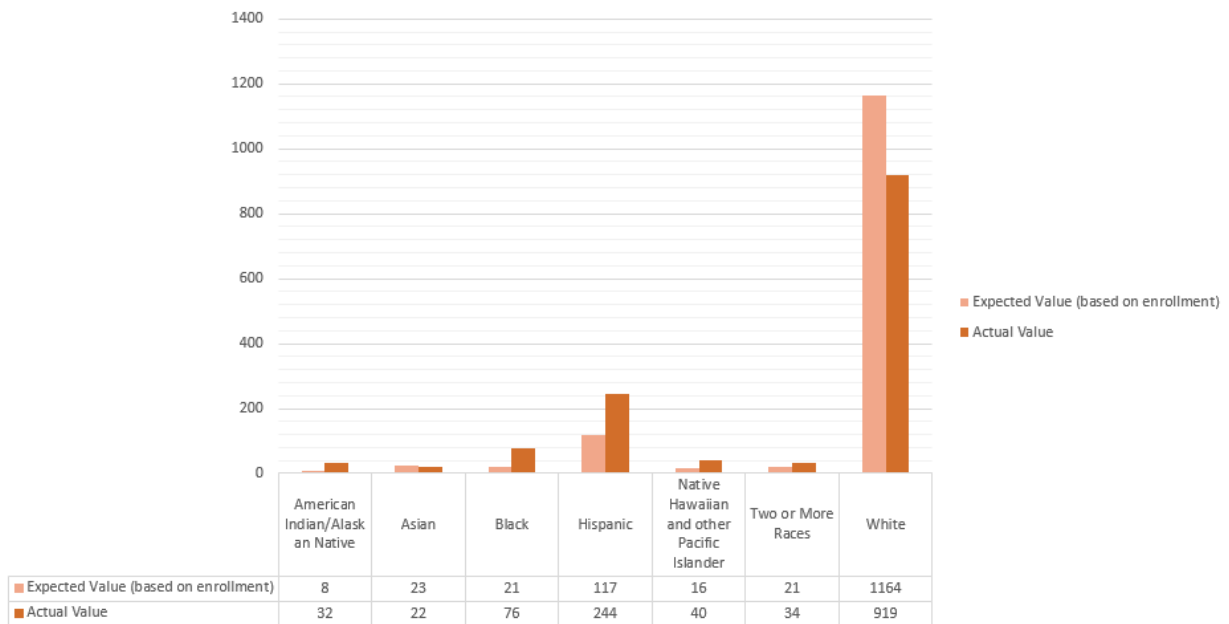
### Disciplinary Actions—Carbon District



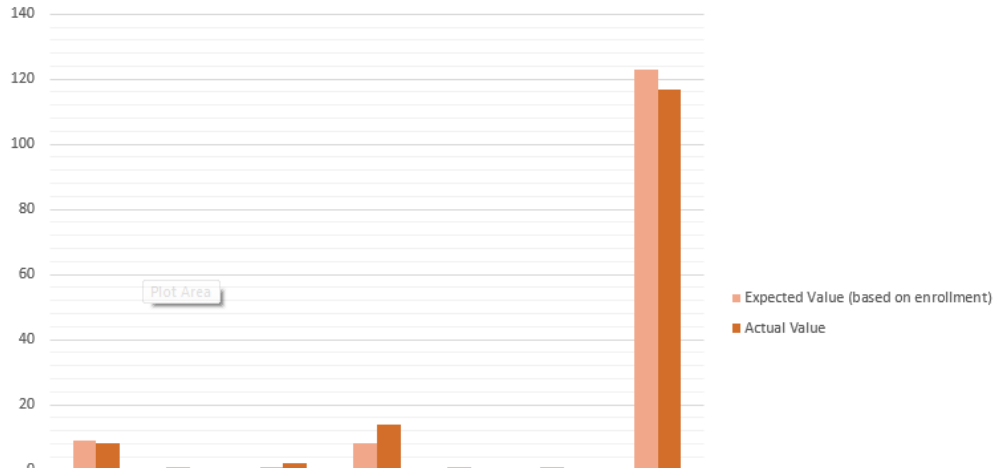
## Disciplinary Actions—Daggett District



## Disciplinary Actions—Davis District

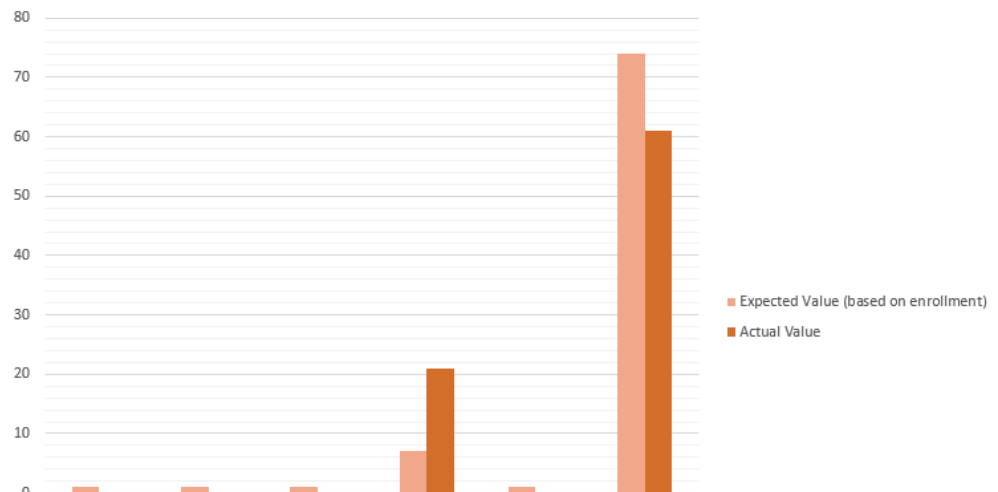


### Disciplinary Actions—Duchesne District



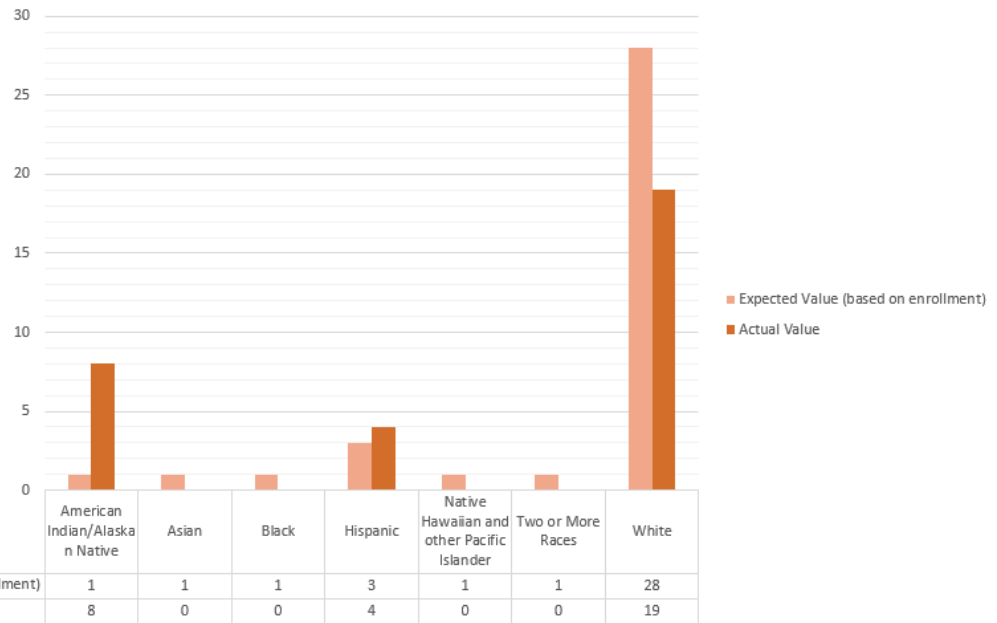
	American Indian/Alaskan Native	Asian	Black	Hispanic	Native Hawaiian and other Pacific Islander	Two or More Races	White
Expected Value (based on enrollment)	9	1	1	8	1	1	123
Actual Value	8	0	2	14	0	0	117

### Disciplinary Actions—Emery District

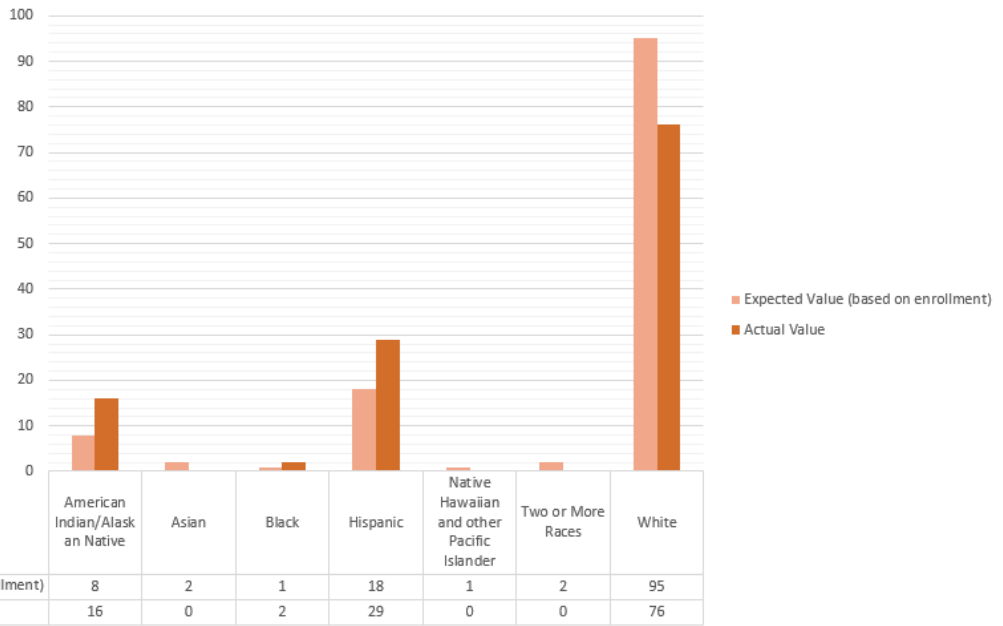


	American Indian/Alaskan Native	Asian	Black	Hispanic	Native Hawaiian and other Pacific Islander	White
Expected Value (based on enrollment)	1	1	1	7	1	74
Actual Value	0	0	0	21	0	61

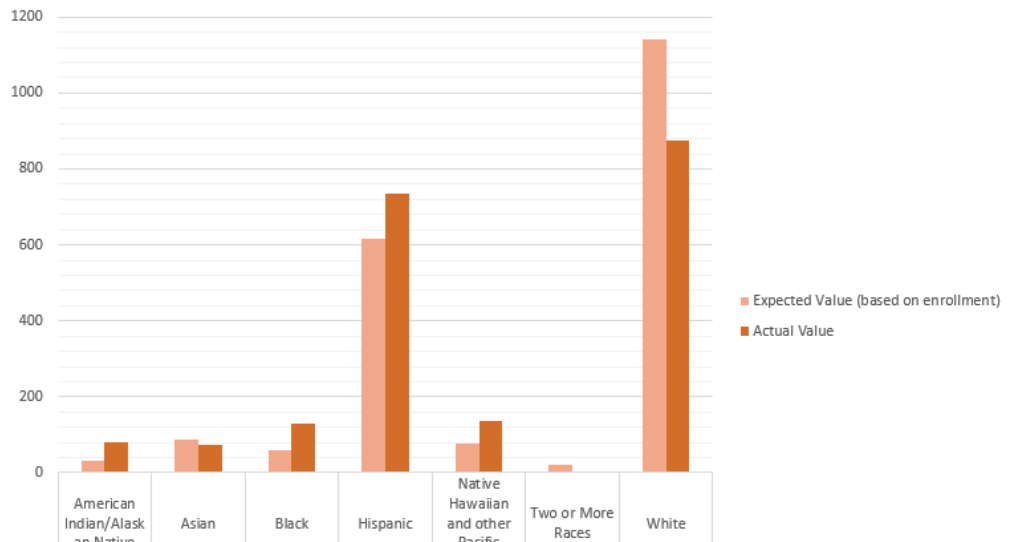
### Disciplinary Actions—Garfield District



### Disciplinary Actions—Grand District

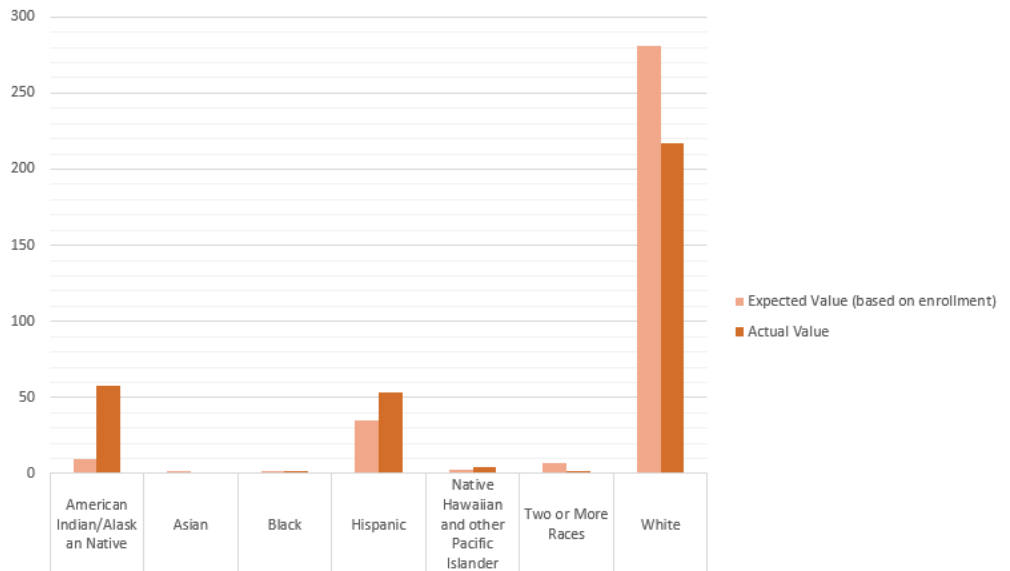


### Disciplinary Actions—Granite District



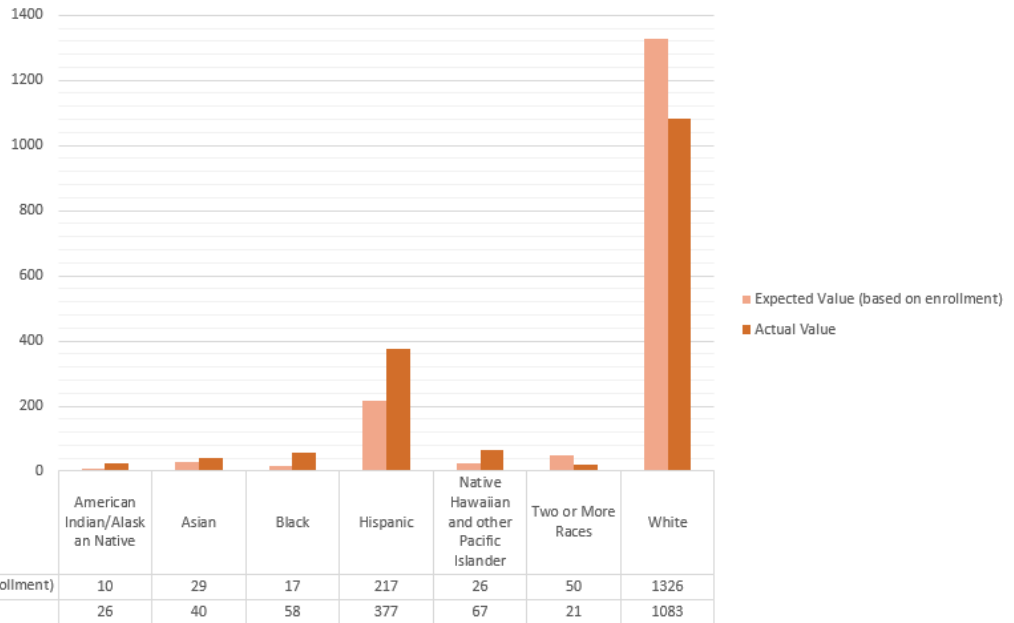
Expected Value (based on enrollment)	33	88	61	616	77	22	1141
Actual Value	82	72	129	736	137	2	876

### Disciplinary Actions—Iron District

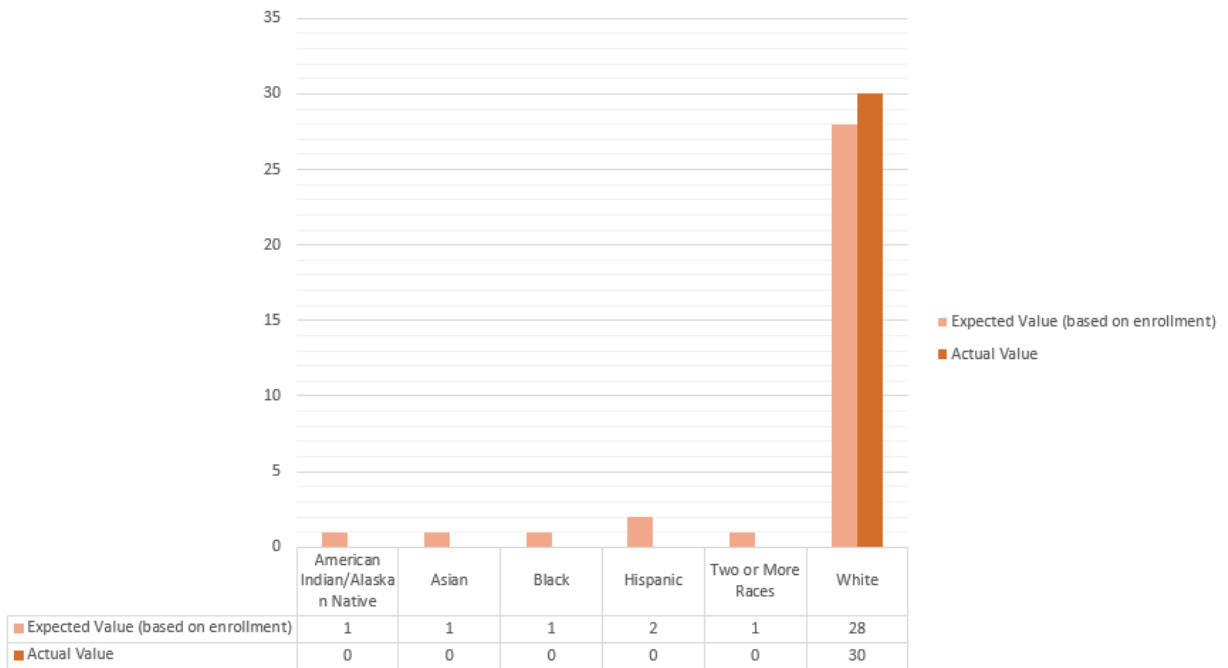


Expected Value (based on enrollment)	10	2	2	35	3	7	281
Actual Value	58	0	2	53	4	2	217

### Disciplinary Actions—Jordan District

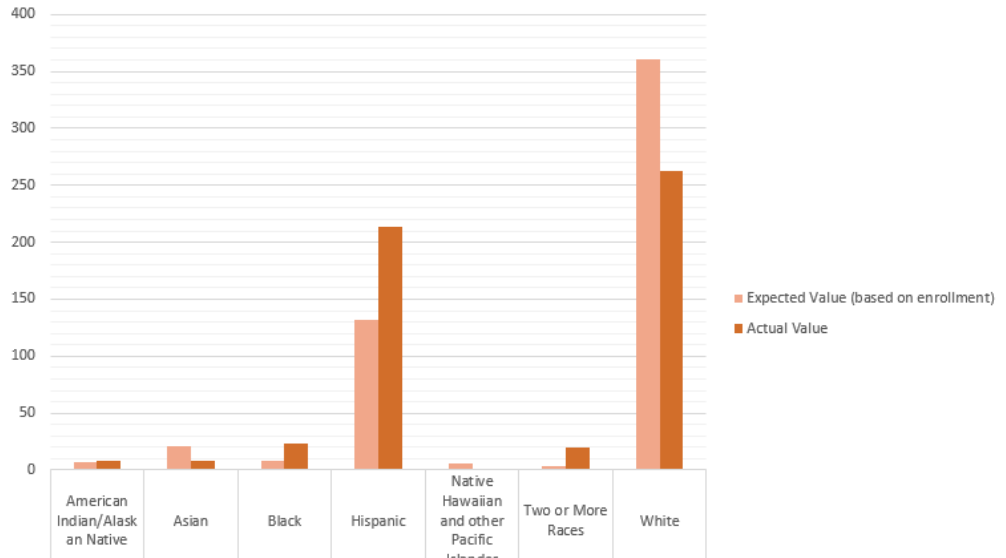


### Disciplinary Actions—Kane District



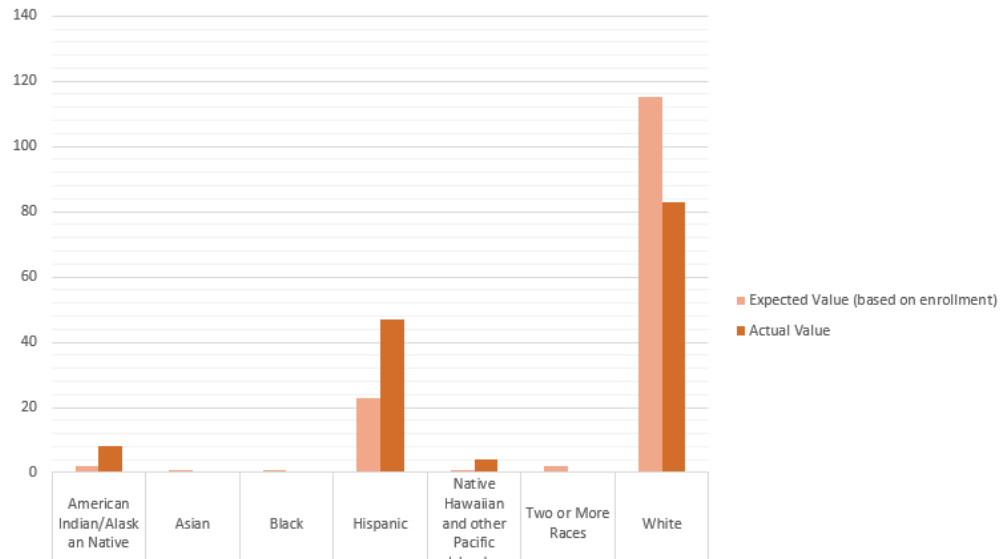


### Disciplinary Actions—Logan District



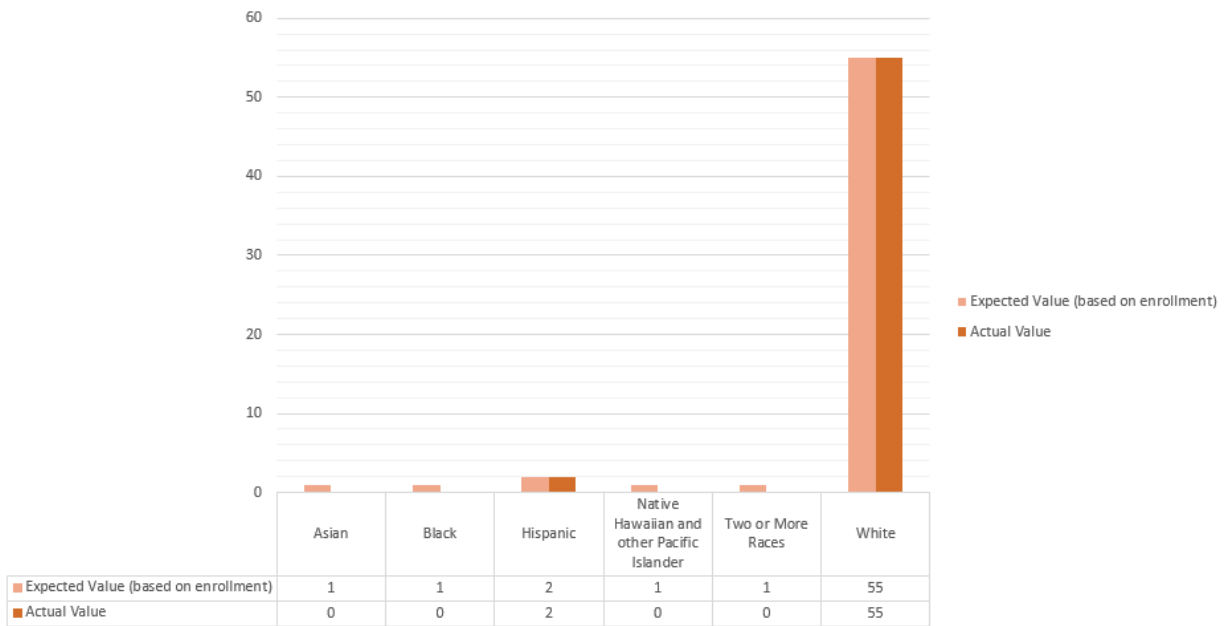
	American Indian/Alaskan Native	Asian	Black	Hispanic	Native Hawaiian and other Pacific Islander	Two or More Races	White
Expected Value (based on enrollment)	7	21	8	132	6	4	361
Actual Value	8	8	23	214	0	20	262

### Disciplinary Actions—Millard District

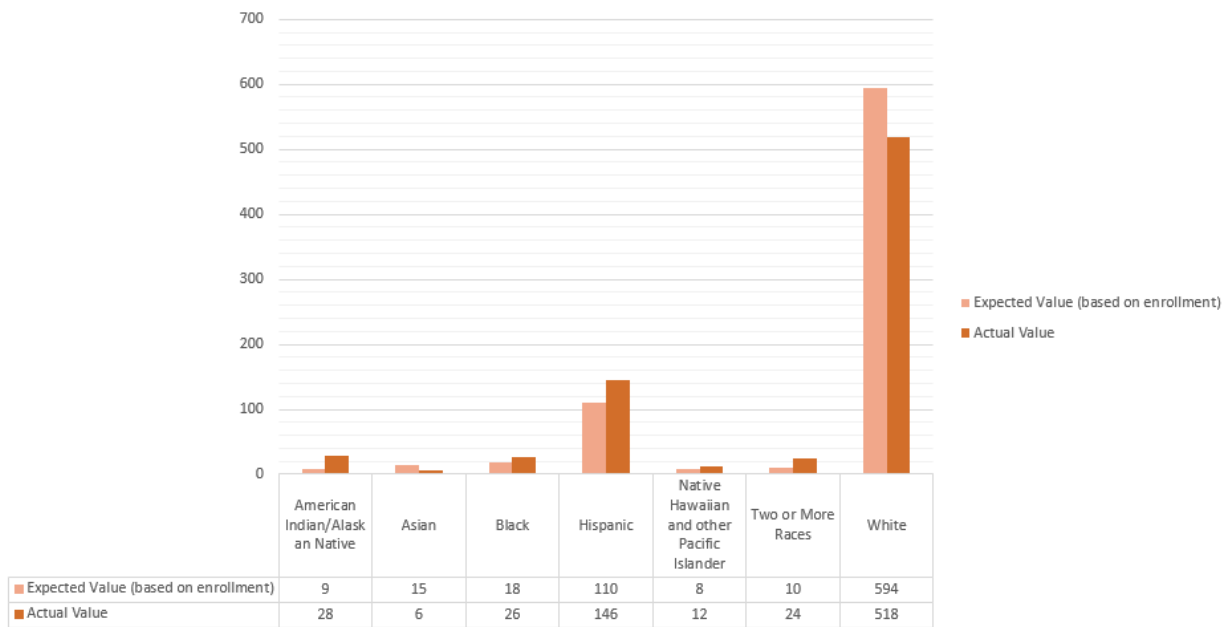


	American Indian/Alaskan Native	Asian	Black	Hispanic	Native Hawaiian and other Pacific Islander	Two or More Races	White
Expected Value (based on enrollment)	2	1	1	23	1	2	115
Actual Value	8	0	0	47	4	0	83

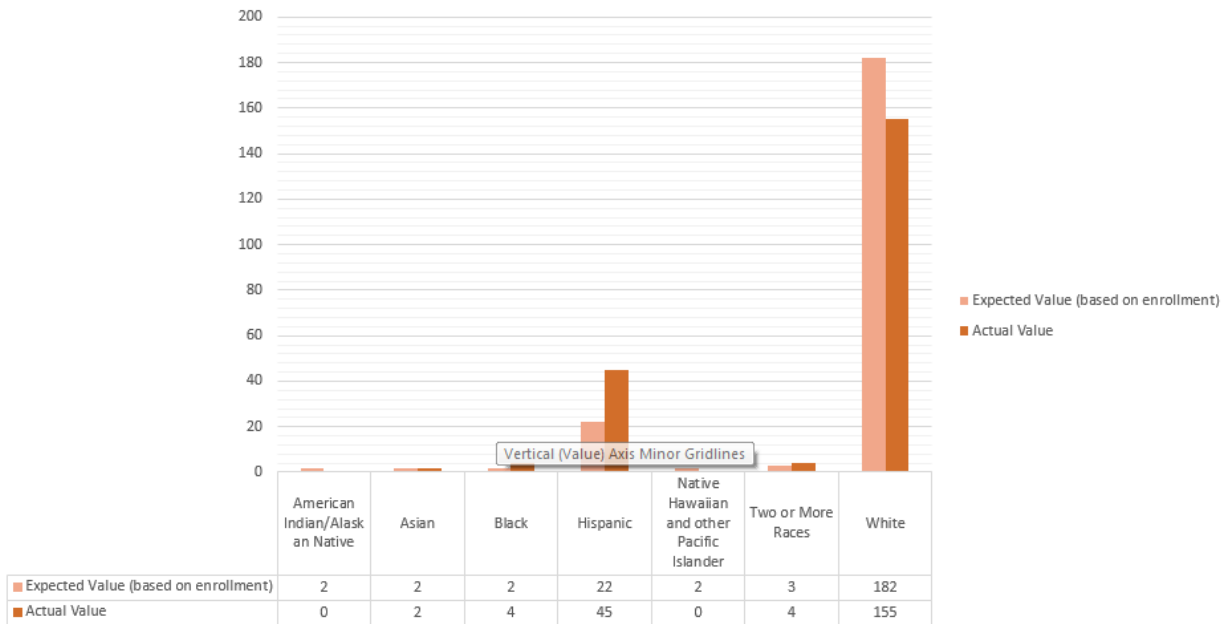
### Disciplinary Actions—Morgan District



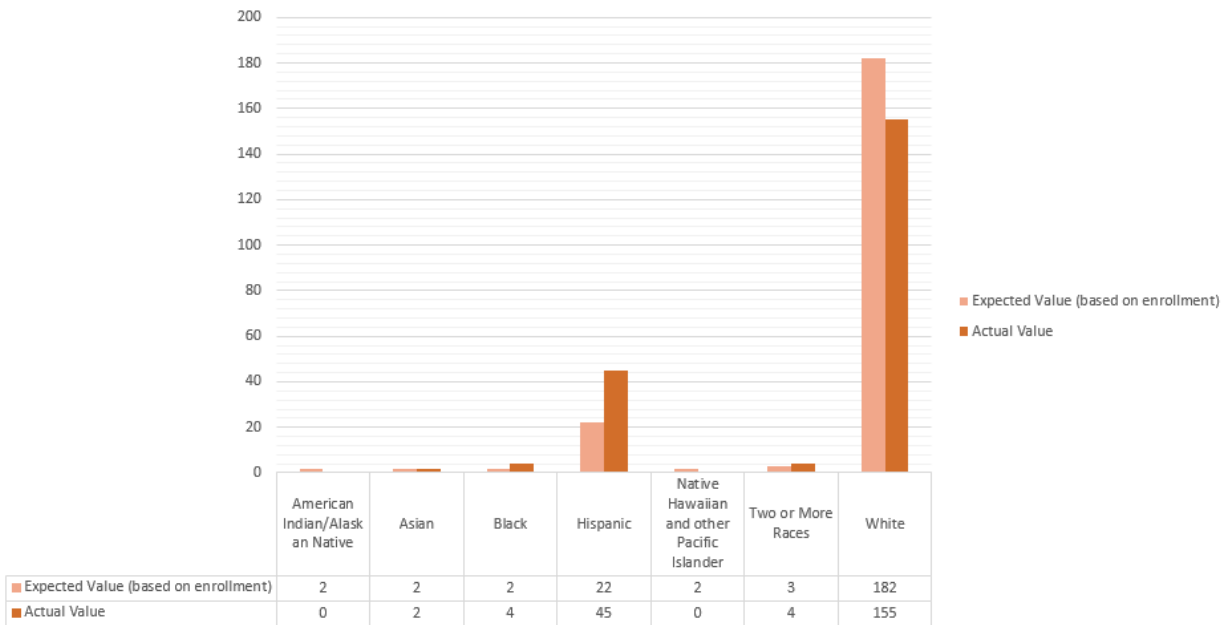
### Disciplinary Actions—Murray District



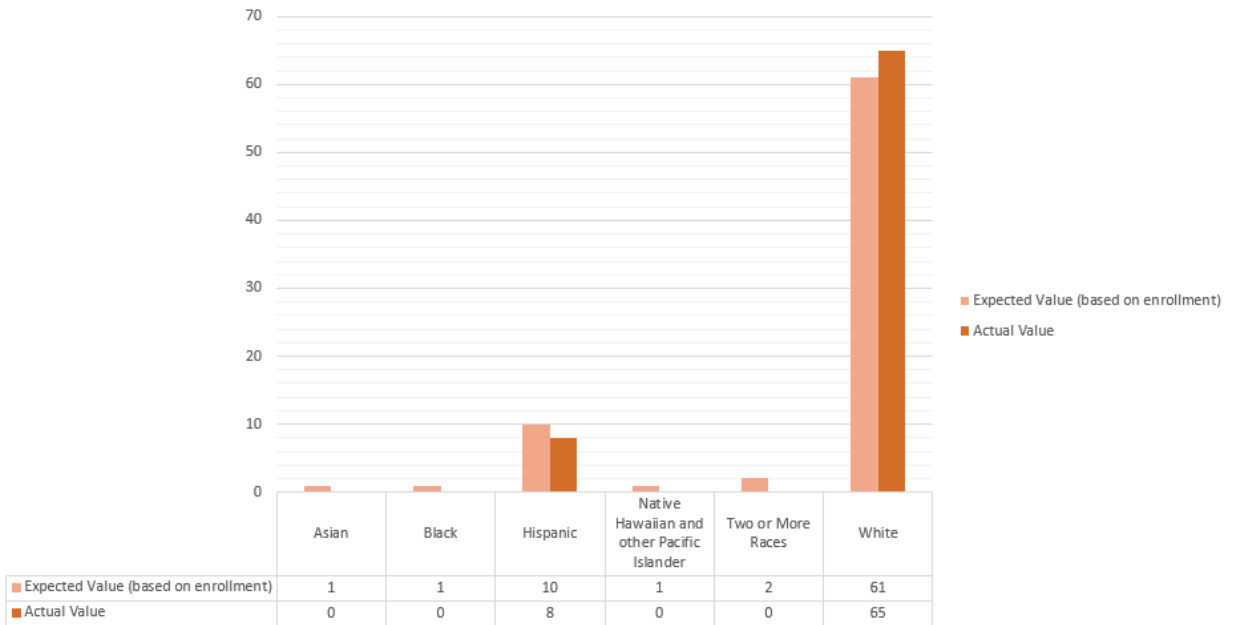
### Disciplinary Actions—Murray District



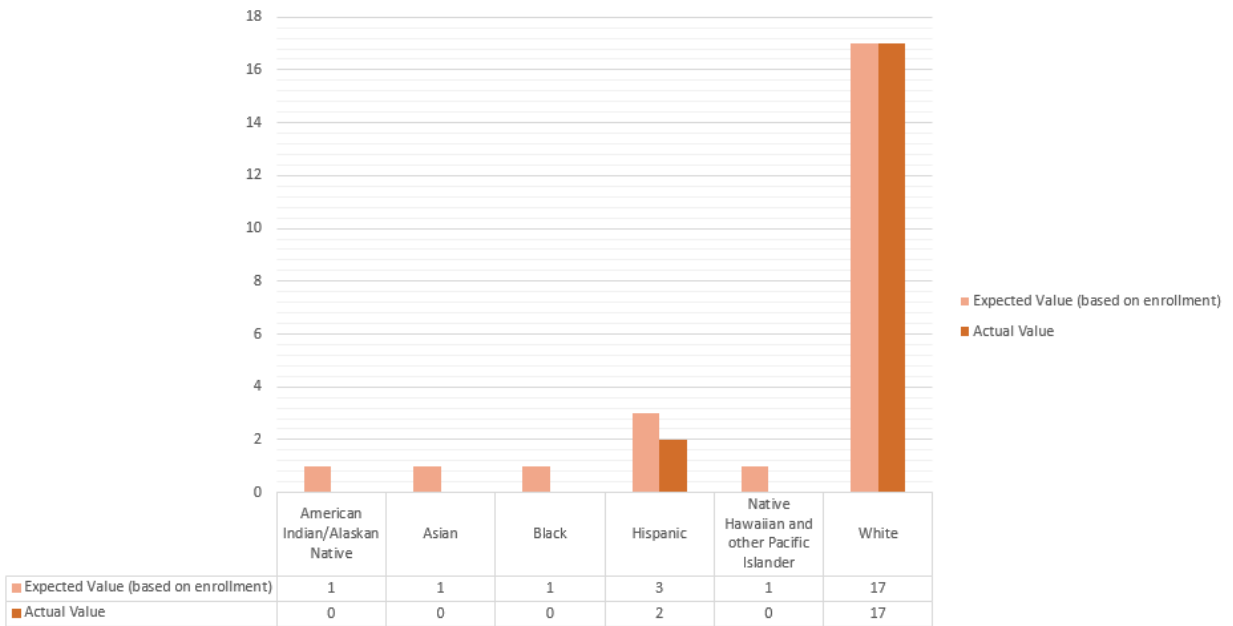
### Disciplinary Actions—Nebo District



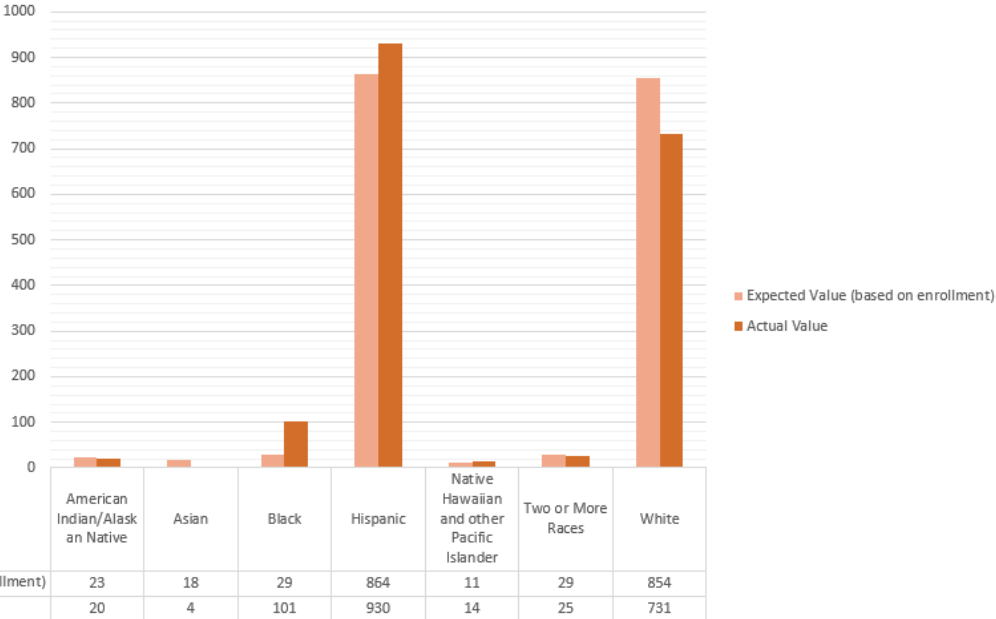
### Disciplinary Actions—North Sanpete District



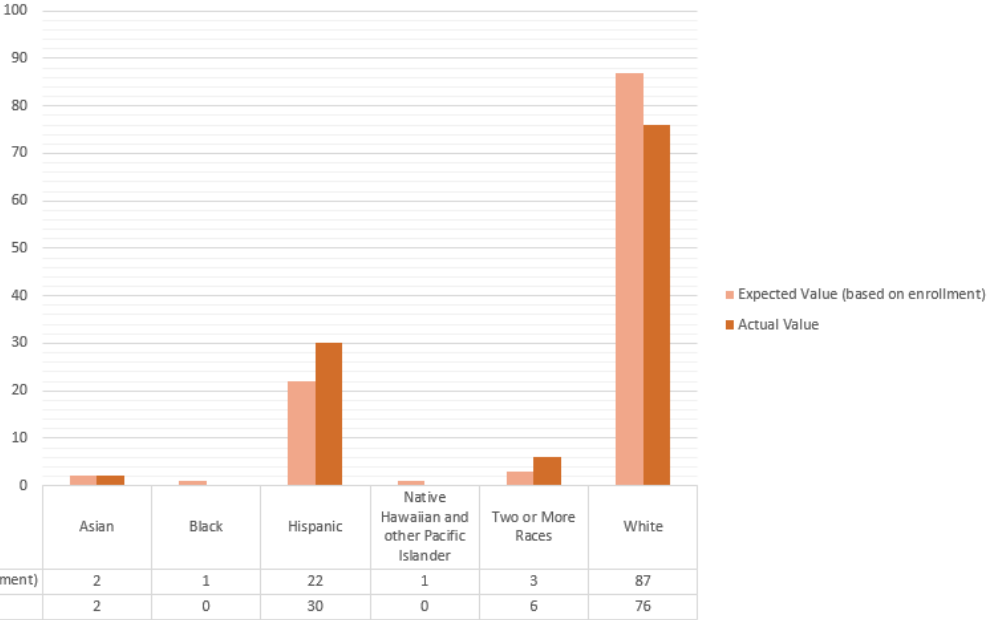
### Disciplinary Actions—North Summit District



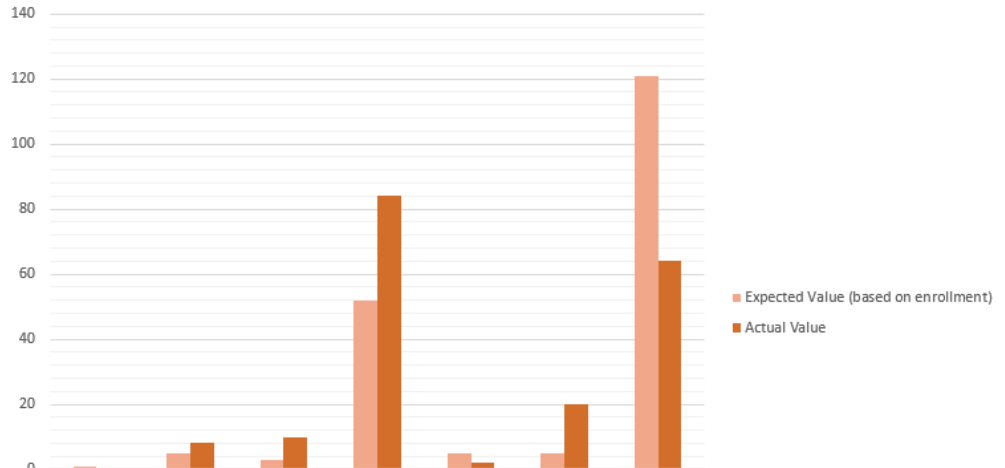
### Disciplinary Actions—Ogden District



### Disciplinary Actions—Park City District

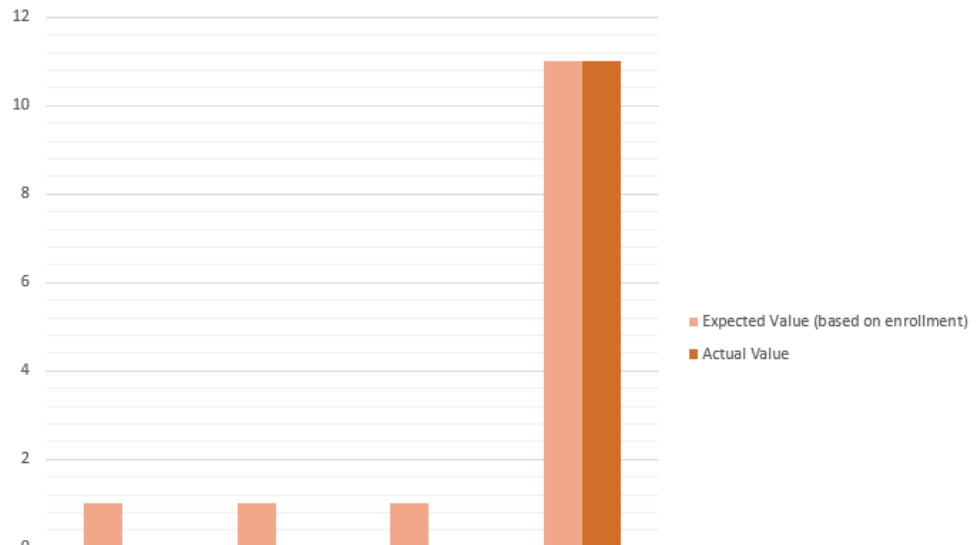


### Disciplinary Actions—Provo District



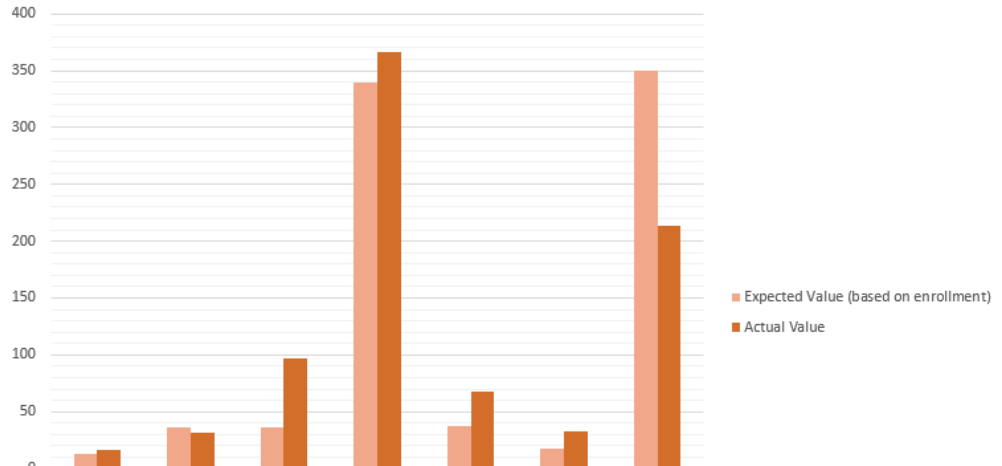
	American Indian/Alaskan Native	Asian	Black	Hispanic	Native Hawaiian and other Pacific Islander	Two or More Races	White
Expected Value (based on enrollment)	1	5	3	52	5	5	121
Actual Value	0	8	10	84	2	20	64

### Disciplinary Actions—Rich District



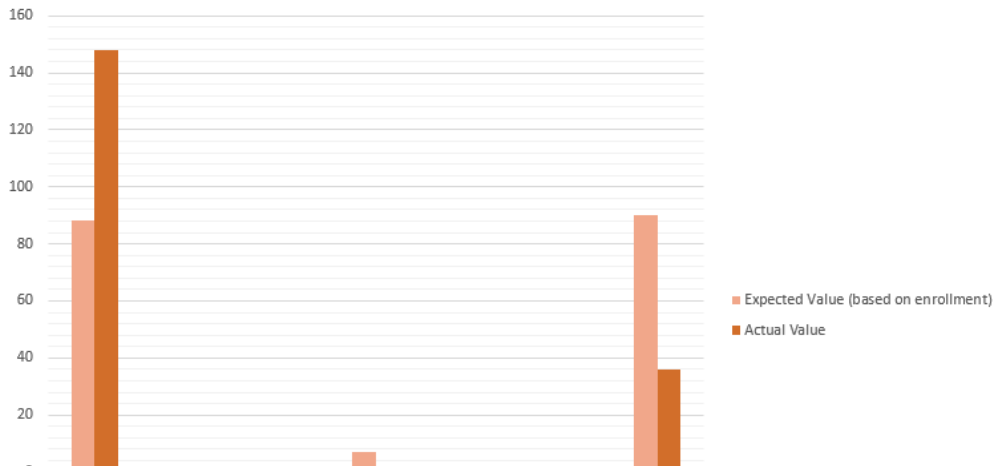
	American Indian/Alaskan Native	Hispanic	Two or More Races	White
Expected Value (based on enrollment)	1	1	1	11
Actual Value	0	0	0	11

### Disciplinary Actions—Salt Lake District



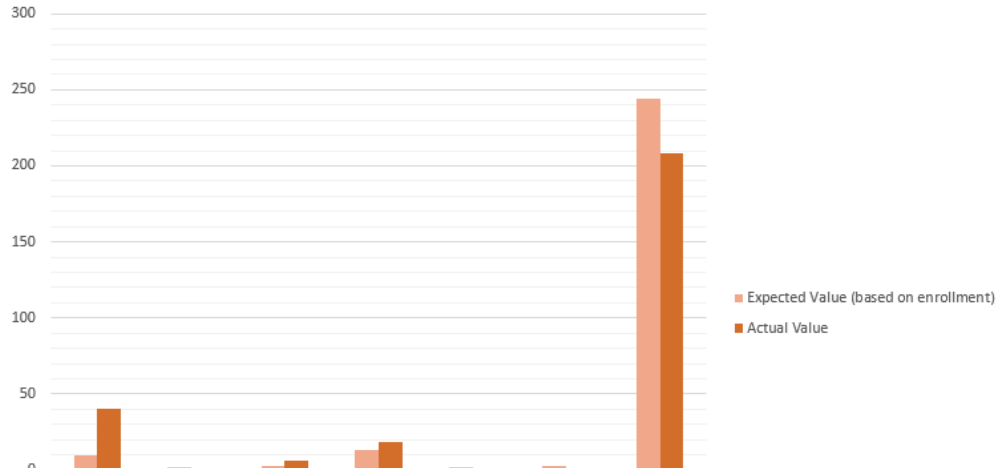
	American Indian/Alaskan Native	Asian	Black	Hispanic	Native Hawaiian and other Pacific Islander	Two or More Races	White
Expected Value (based on enrollment)	13	36	36	339	37	17	350
Actual Value	16	32	97	366	68	33	213

### Disciplinary Actions—San Juan District



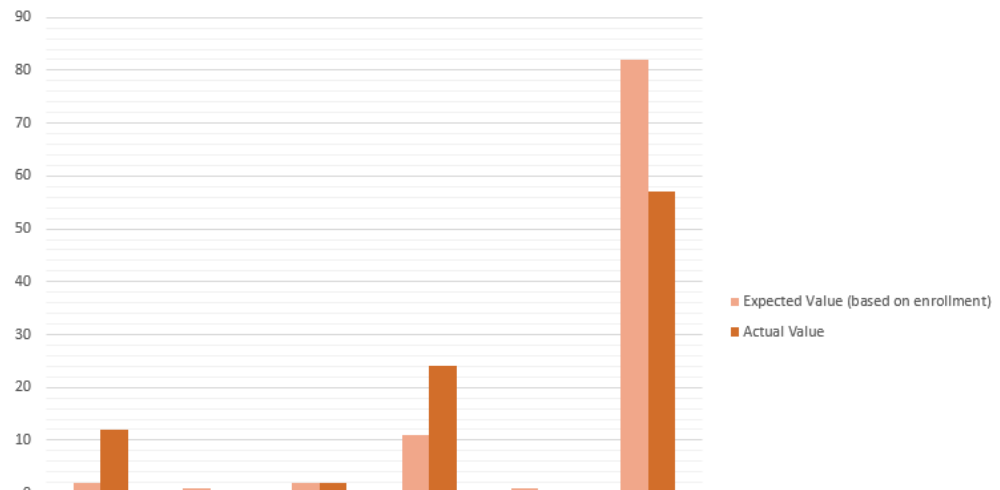
	American Indian/Alaskan Native	Asian	Black	Hispanic	Native Hawaiian and other Pacific Islander	Two or More Races	White
Expected Value (based on enrollment)	88	1	1	7	1	2	90
Actual Value	148	0	0	0	2	0	36

### Disciplinary Actions—Sevier District



	American Indian/Alaskan Native	Asian	Black	Hispanic	Native Hawaiian and other Pacific Islander	Two or More Races	White
Expected Value (based on enrollment)	10	2	3	13	2	3	244
Actual Value	40	0	6	18	0	0	208

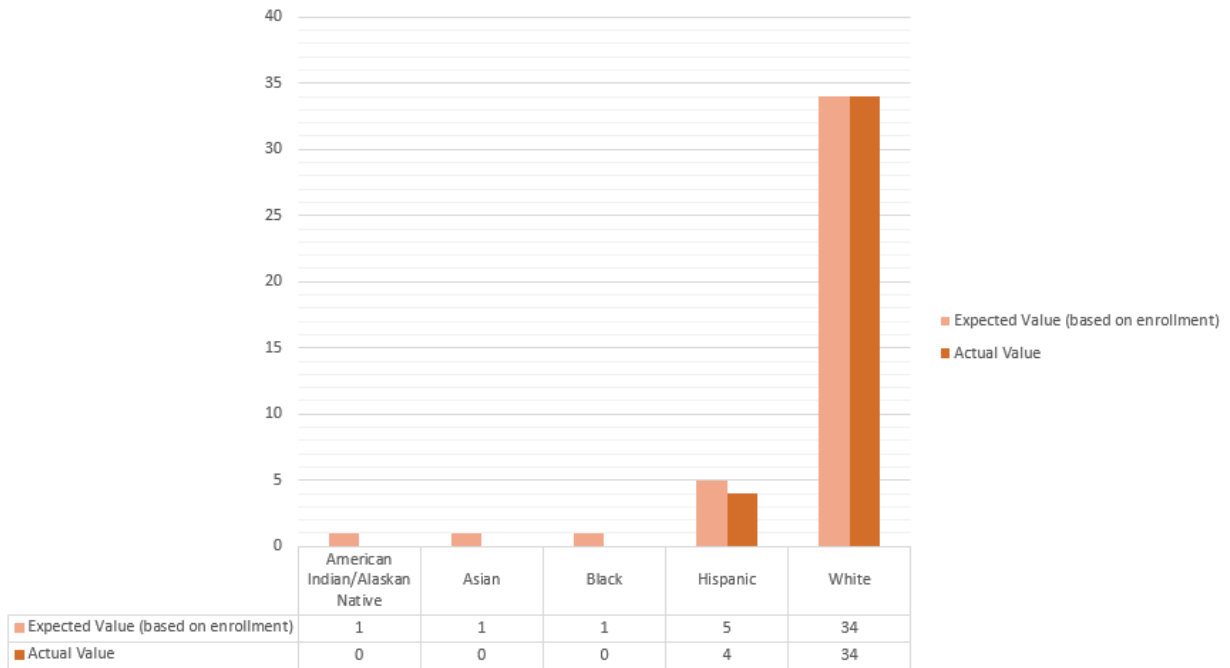
### Disciplinary Actions—South Sanpete District



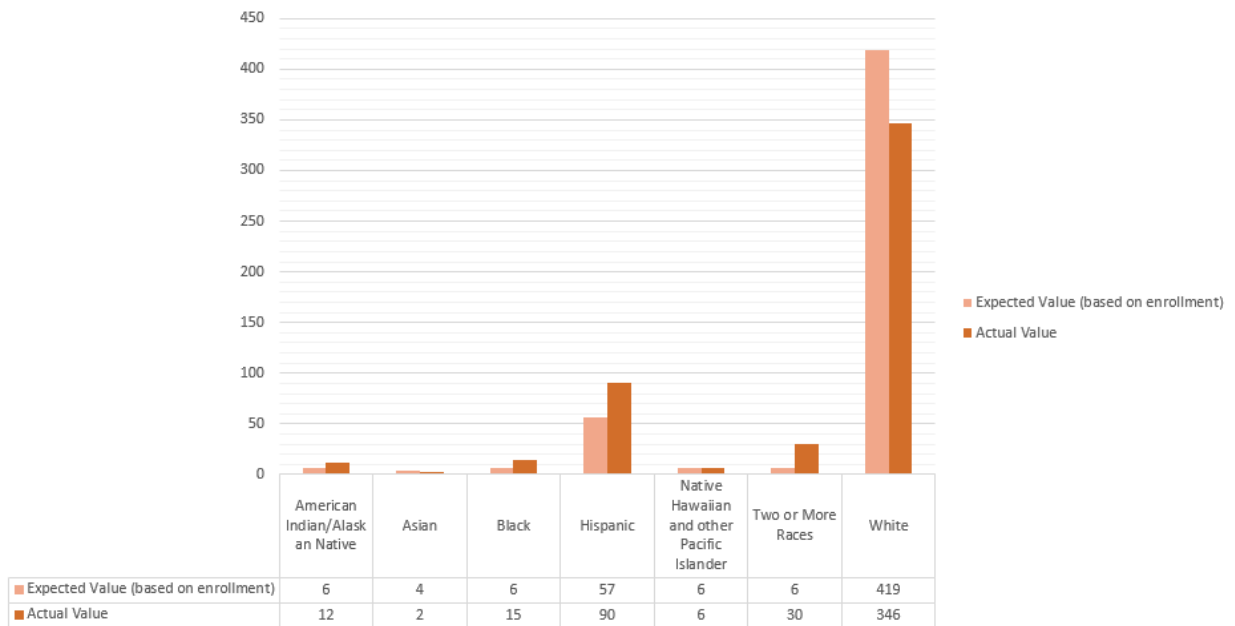
	American Indian/Alaskan Native	Asian	Black	Hispanic	Native Hawaiian and other Pacific Islander	White
Expected Value (based on enrollment)	2	1	2	11	1	82
Actual Value	12	0	2	24	0	57



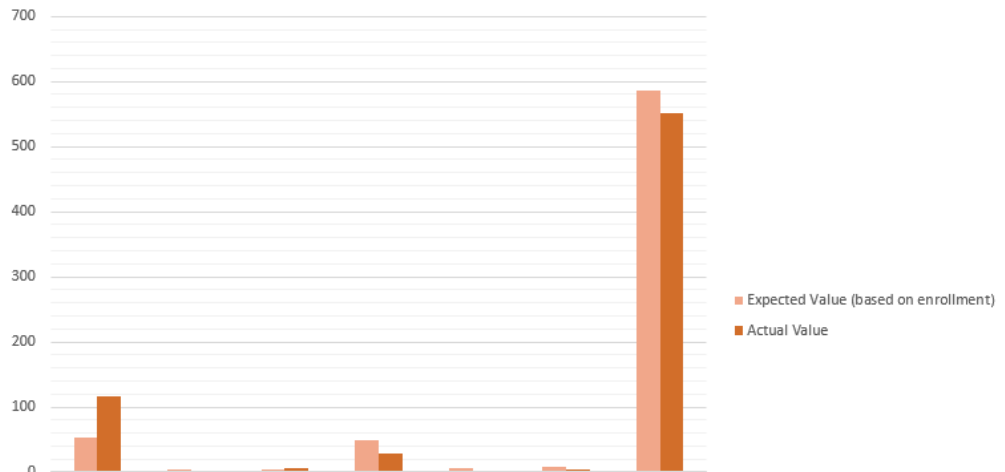
## Disciplinary Actions—South Summit District



## Disciplinary Actions—Tooele District

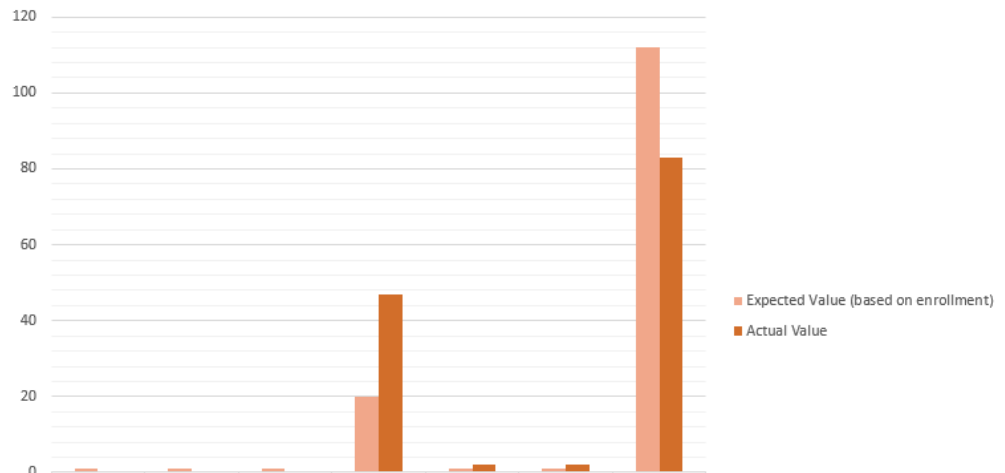


### Disciplinary Actions—Uintah District



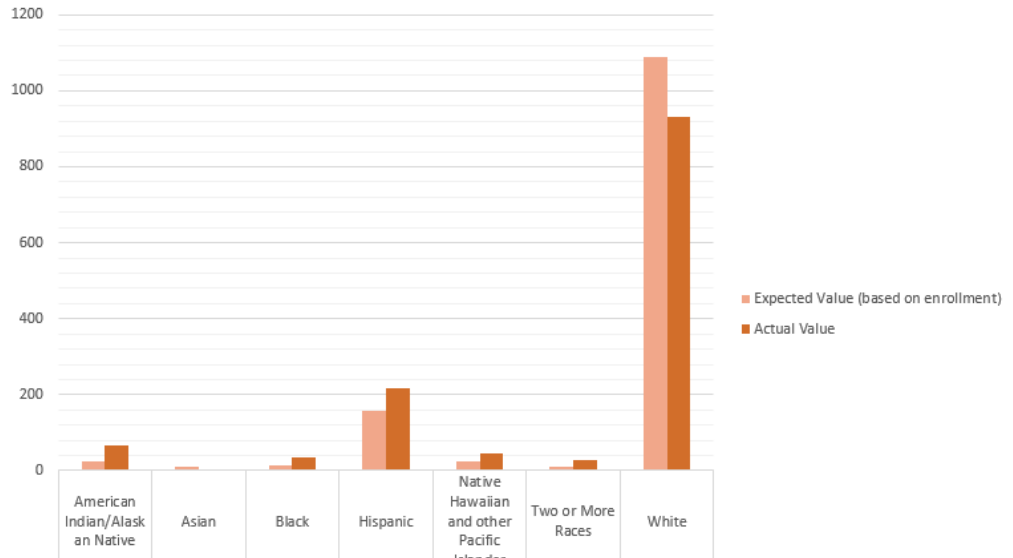
	American Indian/Alaskan Native	Asian	Black	Hispanic	Native Hawaiian and other Pacific Islander	Two or More Races	White
Expected Value (based on enrollment)	54	4	4	48	6	8	586
Actual Value	116	2	6	29	0	4	551

### Disciplinary Actions—Wasatch District



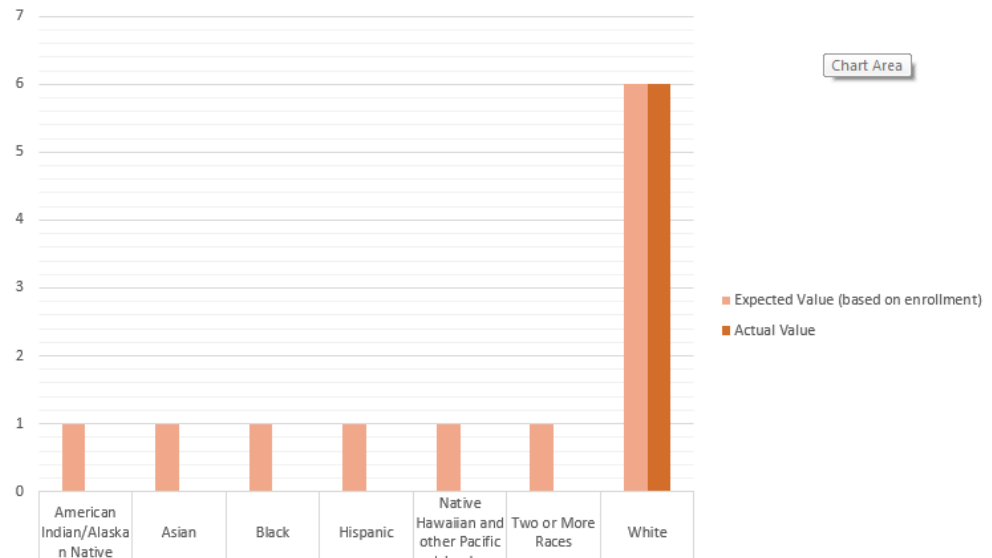
	American Indian/Alaskan Native	Asian	Black	Hispanic	Native Hawaiian and other Pacific Islander	Two or More Races	White
Expected Value (based on enrollment)	1	1	1	20	1	1	112
Actual Value	0	0	0	47	2	2	83

### Disciplinary Actions—Washington District



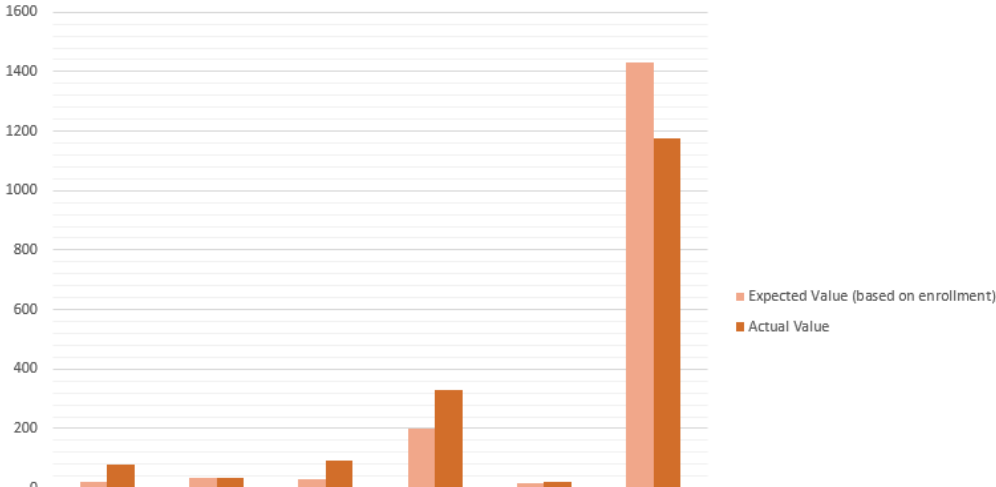
	American Indian/Alaskan Native	Asian	Black	Hispanic	Native Hawaiian and other Pacific Islander	Two or More Races	White
Expected Value (based on enrollment)	25	10	13	159	24	9	1089
Actual Value	68	2	36	218	44	28	930

### Disciplinary Actions—Wayne District



	American Indian/Alaskan Native	Asian	Black	Hispanic	Native Hawaiian and other Pacific Islander	Two or More Races	White
Expected Value (based on enrollment)	1	1	1	1	1	1	6
Actual Value	0	0	0	0	0	0	6

# Disciplinary Actions—Weber District



	American Indian/Alaskan Native	Asian	Black	Hispanic	Native Hawaiian and other Pacific Islander	White
Expected Value (based on enrollment)	23	32	28	202	16	1433
Actual Value	78	32	94	328	22	1177